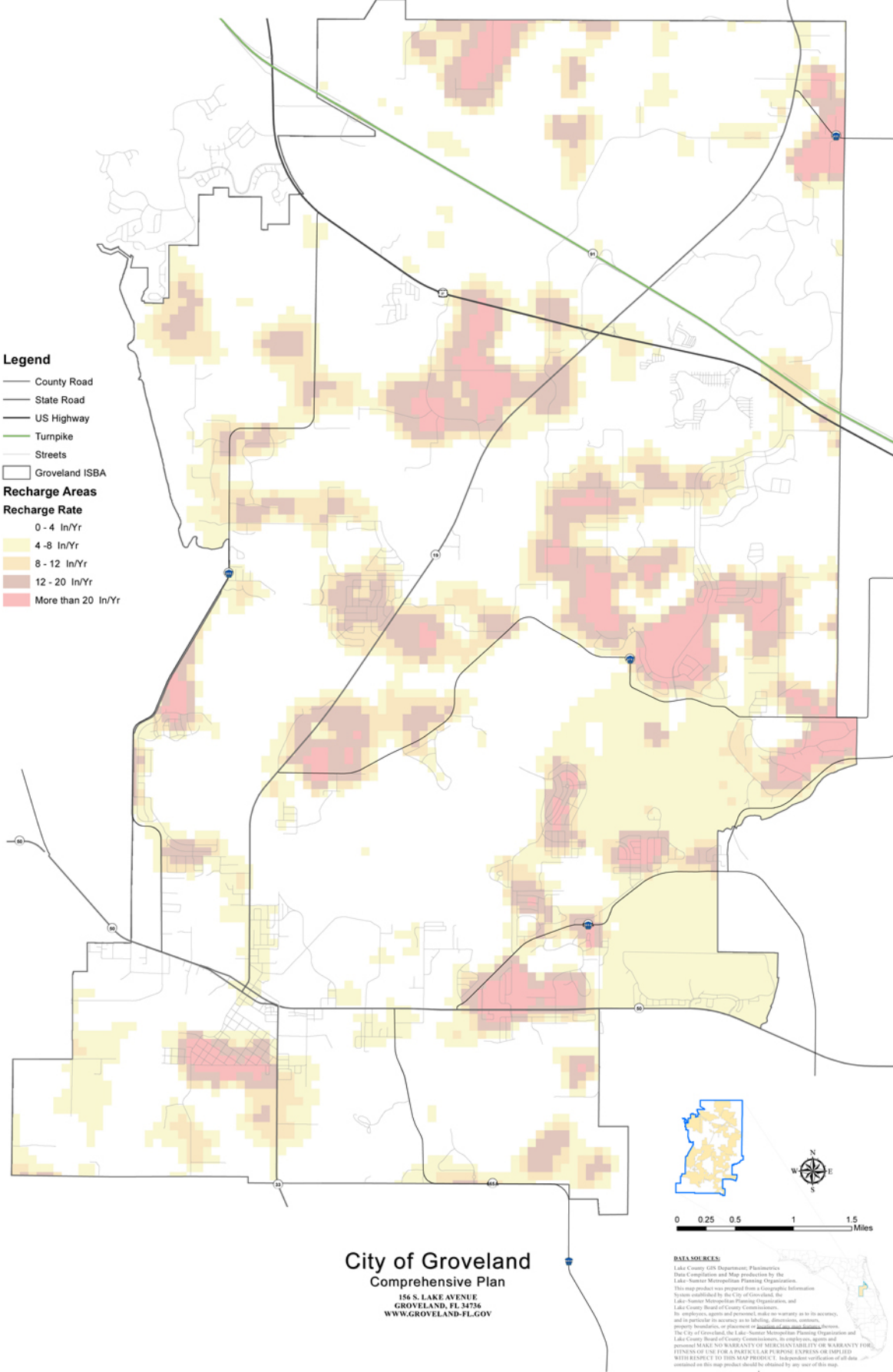


aquifer recharge areas

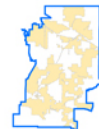


Legend

- County Road
- State Road
- US Highway
- Turnpike
- Streets
- Groveland ISBA

Recharge Areas

- Recharge Rate**
- 0 - 4 In/Yr
 - 4 - 8 In/Yr
 - 8 - 12 In/Yr
 - 12 - 20 In/Yr
 - More than 20 In/Yr



**City of Groveland
Comprehensive Plan**

156 S. LAKE AVENUE
GROVELAND, FL 34736
WWW.GROVELAND-FL.GOV

DATA SOURCES:

Lake County GIS Department, Florioverve Data Compilation and Map production by the Lake-Nassar Metropolitan Planning Organization. This map product was prepared from a Geographic Information System established by the City of Groveland, the Lake-Nassar Metropolitan Planning Organization, and Lake County Board of County Commissioners. Its employment, agents and personnel, make no warranty as to its accuracy, and in particular its accuracy as to labeling, dimensions, content, property boundaries, or placement or boundaries of adjacent features. The City of Groveland, the Lake-Nassar Metropolitan Planning Organization and Lake County Board of County Commissioners, its employees, agents and personnel MAKE NO WARRANTY OF MERCHANTABILITY OR FITNESS FOR USE FOR A PARTICULAR PURPOSE. EXPENSES OR IMPLIED WITH RESPECT TO THIS MAP PRODUCT. Independent verification of all data contained on this map product should be obtained by any user of this map.